



**High-end loudspeaker**

***Model: Elite One***

---

## OWNER'S MANUAL

---

*Dear Music Lover,*

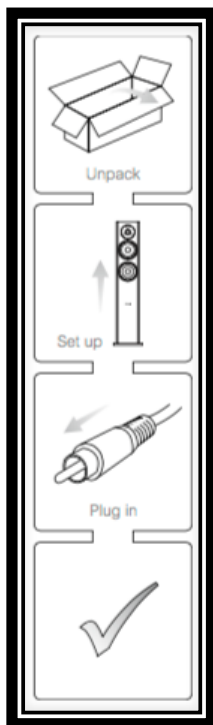
Thank you for your decision to purchase one of NIME audiodesign\s loudspeaker model and thank you for entering our family. No matter which model you choose your audiophile senses will be satisfied with the highest quality music reproduction and unique design that will fit any contemporary interior.

The light motive of the brand was and until this moment remains “Luxury of sound” which allows a small insight into the glamour and magnificence of sound reproduction. By mixing contemporary design, the most quality components and materials with the timeless, inviolable Italian style we have enriched the audiophile community with unique models that meets the highest market requirements.

The roots of the brand are grown in Italy, in Viareggio known as a place where luxury expression reaches its maximum and where the impact of exclusive yachts construction left the imprint on NIME speakers handcrafting.

A beauty in every sense always guided our team. Understanding that the real beauty is in details, we invested all possible efforts not to become “one of the many” with classic and monotonous designs.

The mission and main goal was to stand out, to be unique, to overachieve and amaze you.



## SET-UP

The initial set-up of a Nime audio loudspeaker is relatively easy. Please take your time reading the guidelines and more detailed instructions on the following pages of this manual after completing the rest four steps as listed below.

**1. Unpacking.** Carefully remove the loudspeaker from the packaging and position it with its underside on the floor. Remove the white cloth cover around the loudspeaker. We suggest that you keep the box and white cloth for future use.

**2. Positioning.** Place the loudspeaker facing the listening area at its desired position in the room. Remove the foam plugs from the rear bass re ex port (if provided with your loudspeaker model).

**3. Connecting.** While the amplifier is switched off, connect each loudspeaker to the amplifier with the speaker cable. Turn the volume level all the way down and power the amplifier on.

**4. Listening.** The loudspeaker is now ready to play. Optimal performance will only be realized after careful positioning and running- in the speakers as described over the course of the following pages. **In order to achieve the full speaker capacity follow the operation mode between 8-12 weeks. Feel free to contact our Customer Service department with**

any further questions or for additional assistanc

## HIGH SOUND PRESSURE LEVELS CAUTION

Listening to high sound pressure levels over a longer period of time may harm your hearing. To avoid auditory effect do not listen to high sound levels over a longer period of time.

- Children should be supervised to ensure that they do not play with the appliance.
- Do not use abrasive cloths or sponges for cleaning or other cleaning products, before checking compatibility with the speakers.
- Don't obstruct the passage in the various environments; take care to lay the cables in cable ducts. The place of destination must also ensure a horizontal and stable position.
- Do not leave the speakers exposed to a heat source or in a high-temperature location, such as in the sun or near a heat source. High temperatures can damage the electronic circuitry and compromise the quality of sound reproduction.
- Do not leave the speakers in dusty or dirty locations as it may damage components.
- Do not leave the speakers in cold areas. Returning to normal temperature can cause condensation inside the unit.
- Do not operate the units outside of the following temperature range: from -4° to 131°F (from -20° to 55°C)
- Avoid wetting and exposing to steam.
- Do not open the cabinets of the speakers for any reason the speaker. Tampering of any component will void the warranty, and may result in generation of potentially hazardous electromagnetic fields



## PRODUCT DESCRIPTION

ELITE ONE S was the first one that broke the market and our biggest challenge, at the same time. Elite one was our signature speaker which was showing our desire to be different by doing something that no one did on the market – assembling the whole unit from welding and polishing the steel. Hand-handling 8 mm thick stainless steel we achieved innovative and modern design with excellent acoustic performance. The massive structure and considerable weight of the stands gives the stability to the loudspeaker and a great sonic contribution, especially in the low ranges. With this unique production method Nime audio design is one of the few companies, in the world, that adopts this complex processing.

The only difference between Elite One S and Elite One is that the Elite one is made out of composite materials -wood and aluminum, while the design and material of the stands are identical. Elite One represents a 2-way, bass reflex speaker designed for the most demanding audio enthusiasts and for the stages where a profound, compact and powerful sound is required. Completely handcrafted by professional and skilled craftsman this unit is a state of art in the sense of exterior design.

NIME policy was and it will always be to implement only the best quality components – in order to deliver a true value to the customers. The crossover is placed inside the stands and separated from the negative influence of driver electromagnetic.

Elite One speakers are compatible with a big range of amplifiers (solid state or tube) thanks to its easy impedance mode.

---

OWNER'S MANUAL

---

**TECHNICAL SPECIFICATION**

<b>Cabinet</b>	Solid 10mm steel - for polished or satin effect or reinforced aluminum sandwich cabinet - for lacquering
<b>Enclosure Type Woofer</b>	2-way rare reflex
<b>Driver units</b>	1-TW 25mm (1 ") Thiel & Partner Accuton ceramic dome, 1-Bass Midrange 173mm (7 ") Thiel & Partner Accuton in ceramic
<b>Frequency Response</b>	42hz- 20Khz
<b>Sensitivity</b>	88 dB, spl (2,83v/1m)
<b>Nominal Impedance</b>	8 Ohm, minimum 7 Ohm
<b>Minimum Amplifier Power</b>	15 - 120 Watts RMS
<b>Cabinet Dimensions (H x W x D)</b>	310mm x 270mm x 430mm

---

OWNER'S MANUAL

---

**Enclosure Dimensions (H x W x D)** 1180mm x 450mm x 800mm

**Finishes** Finish glossy Black, White, Wood, other on request

**Stand Finishes** Polished chrome or satin, black

**Weight** Elite One: 45 kg each  
Elite One S: 60 kg each

**Available finishing of the speakers** Glossy white, Lacquered black, Matt black, Satin steel,  
Personalized lacquering

**Available finishing of the stands (includes 6 cm spikes for decoupling from the ground)** Satin steel, Polished massive steel

---

## POSITIONING

### Loudspeaker placement

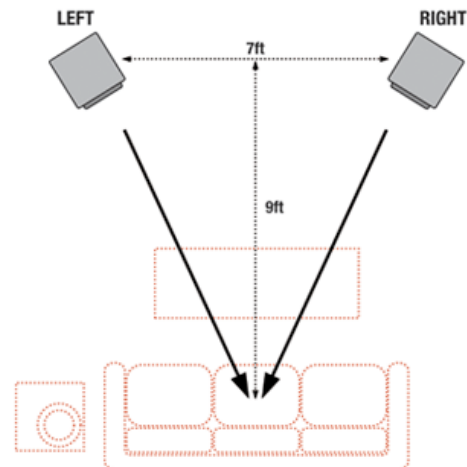
The starting point for any setup will be to create a triangle between each loudspeaker and the listening seat. Each side of the triangle should have about the same distance. From this starting point the best possible sound staging and sound balance can be found.

### Distance between loudspeakers

Setting the distance between the speakers is a trade-off between a wide sound and a precise center image. The farther apart the speakers (with the same listening position) the wider the sound stage, however the center image weakens. Achieve the best possible balance for your listening taste.

### Distance between loudspeaker and the rear wall

The distance to the rear wall should be at least 0.5 meters. The rear wall reacts the low frequency sound into the room making the sound more bass-heavy with more slam and changes the tonal balance of the sound. The nearer the rear wall the more bass. But this will also color the sound and make the room impose the sound even further in the bass region. Move the speakers back and forth to achieve the right tonal balance (with the listening seat at the same position).





Moving the speaker further into the room also improves the depth of the soundstage. Achieve the right trade-off between the tonal balance and the depth of the soundstage.

**Position of the listening point**

The distance between the speakers and the listening position, also called the sweet spot, should be at least 7 ft (2 – 2.5 meters) for the sound from the woofers, midranges and tweeters to integrate. Be careful not to have the listening position right next to a wall. In the best listening position everything snaps into focus, the soundstage is precise and spacious and the tonal balance is just right. Move the listening position back and forth to achieve this.

## CONNECTING THE SPEAKERS

Before connecting the loudspeakers to your amplifier, switch off the amplifier completely.

Step 1: Connect a two-pole loudspeaker cable to the binding posts of the LEFT speaker, located at rear of the Cabinet. Connect one cable lead to the red (+) post, and the other cables lead to the white (-) post. Connect a two-pole loudspeaker cable to the binding posts of the RIGHT speaker, located at rear of the Cabinet. Connect one cable lead to the red (+) post, and the other cables lead to the white (-) post.

Step 2: With your amplifier switched off, connect the other end of the left loudspeaker cable to the left left loudspeaker outputs of the amplifier. Take care to ensure the correct polarity: Chose the red (+) output and white or black (-) output according to the loudspeaker binding posts.



Ensure that the positive and negative cables (+/-) do not make contact with each other. Otherwise your amplifier or loudspeakers may be damaged. Ensure that the connectors have a clean contact area and that the contact is tight., loudspeaker cables that will suit both your electronics and the NIME loudspeakers. Tighten the posts and check the contact regularly to make sure that it hasn't loosened over time.

---

OWNER'S MANUAL

---

*THANK YOU FOR CHOOSING NIME AUDIO.*

*WE WISH YOU PURE ENJOYMENT IN EVRTY NOTE.*

**Nime Audiodesign**

Via del Porto, 750, 55054 Massarosa (Lu) Italy

Mobile: +39 339 2349772

[www.nimeaudiodesign.com](http://www.nimeaudiodesign.com), [info@nimeaudiodesign.com](mailto:info@nimeaudiodesign.com)