



High-end subwoofer

Model: Black diamond

OWNER'S MANUAL

Dear Music Lover,

Thank you for your decision to purchase one of NIME audiodesign loudspeaker model and thank you for entering our family. No matter which model you choose your audiophile senses will be satisfied with the highest quality music reproduction and unique design that will fit any contemporary interior.

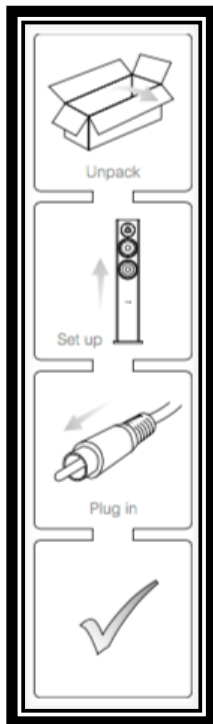
The light motive of the brand was and until this moment remains “Luxury of sound” which allows a small insight into the glamour and magnificence of sound reproduction. By mixing contemporary design, the most quality components and materials with the timeless, inviolable Italian style we have enriched the audiophile community with unique models that meets the highest market requirements.

The roots of the brand are grown in Italy, in Viareggio known as a place where luxury expression reaches its maximum and where the impact of exclusive yachts construction left the imprint on NIME speakers handcrafting.

A beauty in every sense always guided our team. Understanding that the real beauty is in details, we invested all possible efforts not to become “one of the many” with classic and monotonous designs.

The mission and main goal was to stand out, to be unique, to overachieve and amaze you.

|



SET-UP

The initial set-up of a Nime audio loudspeaker is relatively easy. Please take your time reading the guidelines and more detailed instructions on the following pages of this manual after completing the rest four steps as listed below.

1. Unpacking. Carefully remove the loudspeaker from the packaging and position it with its underside on the floor. Remove the white cloth cover around the loudspeaker. We suggest that you keep the box and white cloth for future use.

2. Positioning. Place the loudspeaker facing the listening area at its desired position in the room. Remove the foam plugs from the rear bass re ex port (if provided with your loudspeaker model).

3. Connecting. While the amplifier is switched off, connect each loudspeaker to the amplifier with the speaker cable. Turn the volume level all the way down and power the amplifier on.

4. Listening. The loudspeaker is now ready to play. Optimal performance will only be realized after careful positioning and running- in the speakers as described over the course of the following pages. **In order to achieve the full speaker capacity follow the**

operation mode between 8-12 weeks. Feel free to contact our Customer Service department with any further questions or for additional assistanc

HIGH SOUND PRESSURE LEVELS CAUTION

Listening to high sound pressure levels over a longer period of time may harm your hearing. To avoid auditory effect do not listen to high sound levels over a longer period of time.

- Children should be supervised to ensure that they do not play with the appliance.
- Do not use abrasive cloths or sponges for cleaning or other cleaning products, before checking compatibility with the speakers.
- Don't obstruct the passage in the various environments; take care to lay the cables in cable ducts. The place of destination must also ensure a horizontal and stable position.
- Do not leave the speakers exposed to a heat source or in a high-temperature location, such as in the sun or near a heat source. High temperatures can damage the electronic circuitry and compromise the quality of sound reproduction.
- Do not leave the speakers in dusty or dirty locations as it may damage components.
- Do not leave the speakers in cold areas. Returning to normal temperature can cause condensation inside the unit.
- Do not operate the units outside of the following temperature range: from -4° to 131°F (from -20° to 55°C)
- Avoid wetting and exposing to steam.
- Do not open the cabinets of the speakers for any reason the speaker. Tampering of any component will void the warranty, and may result in generation of potentially hazardous electromagnetic fields



PRODUCT DESCRIPTION

Avant-garde and elegance

Thanks to the growing market of Home theater products and a necessity to give powerful low frequencies extension to our models we released the first subwoofer model “Black diamond”. Generally speaking an unwritten rule dictates a bit of an unattractive design of subwoofers – for which reason they are being hidden.

Our design was inspired with the idea to put Black Diamond in the center of attention as the protagonist of the surrounding scene.

Shaped like crystal it reflects artistic elegance. But, as all Nime products, the shape doesn't only have the design function. The strong symmetry of its three-dimensional geometry contrasts the softness of the sound.

Chasing is made of 40 mm thick census material; composed of 23 sides (faces) in different shapes and angles creating an innovative, diamond form that provides maximum structural rigidity and helps to neutralize the spurious frequencies inside the chasing.

In the desire to stay loyal to our tradition we kept stainless steel details as well as 10 inch, aluminum cone woofer with bass reflex loaded.

OWNER'S MANUAL

TECHNICAL SPECIFICATION

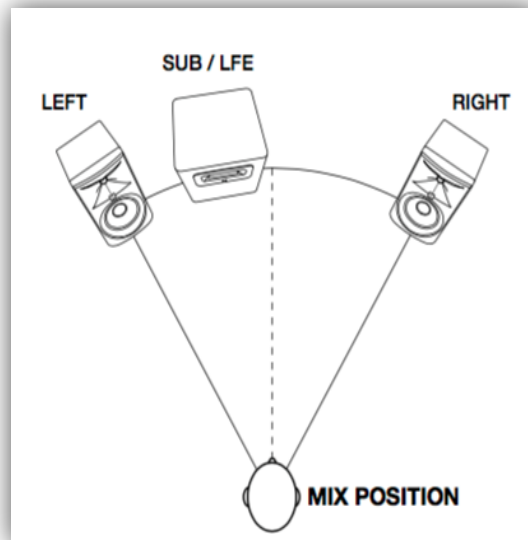
System	Bass reflex
Frequency Response	30-180 Hz
Applicable power	200 Watts max.
Dimension (H x W x D)	500 x 650 x 440 mm
Finish	Glossy white, lacquered black, matt black .
Weight	35 Kg
Available finishing	Glossy white, Lacquered black, Matt black, Personalized lacquering

POSITIONING

The listening distance can be determined according to your preference, the acoustics of your room, and the maximum SPL (sound pressure level) you want to hear at the listening position.

The low frequency driver of the Black Diamon is mounted on the bottom panel of the subwoofer. Before placing the subwoofer, make sure the position on the floor is free of any large objects that can interfere with or damage the woofer.

In a stereo system, the subwoofer should be placed directly on the floor, located between the left and right speakers. The distance of the subwoofer from the listening position can be adjusted to produce the optimum bass in the system. Placing the subwoofer close to a wall or in a corner generally will increase the amount of bass heard in the room. Experiment to determine the Subwoofer placement that produces the best balance and quality of bass in the system.



CONNECTING

Black diamond belongs to the family of “Passive subwoofers”, meaning it needs to be powered by an external amplifier.

The important consideration is that since subwoofers need more power to reproduce low-frequency sounds, an amplifier or receiver needs to be able to output enough power to sustain bass effects reproduced by the subwoofer without draining the receiver's or amplifier's power supply.

Just as the rest of the loudspeakers in a home theater setup, you connect speaker cable from an amplifier to the passive subwoofer. Ideally, you should first connect the subwoofer line outputs of a home theater receiver or AV preamp processor to the line inputs of an external subwoofer amplifier.

You then connect the speaker outputs on the subwoofer amplifier to the speaker terminals on the passive subwoofer.

OWNER'S MANUAL

THANK YOU FOR CHOOSING NIME AUDIO.

WE WISH YOU PURE ENJOYMENT IN EVRTY NOTE.

Nime Audiodesign

Via del Porto, 750, 55054 Massarosa (Lu) Italy

Mobile: +39 339 2349772

www.nimeaudiodesign.com, info@nimeaudiodesign.com

|